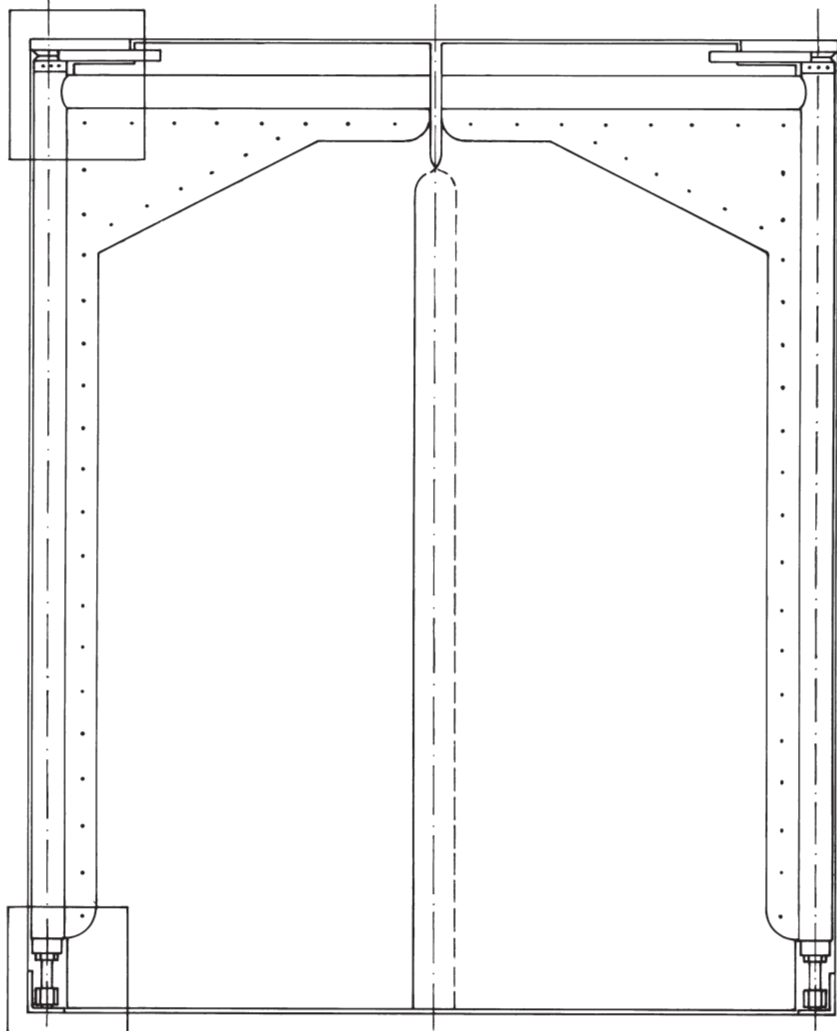
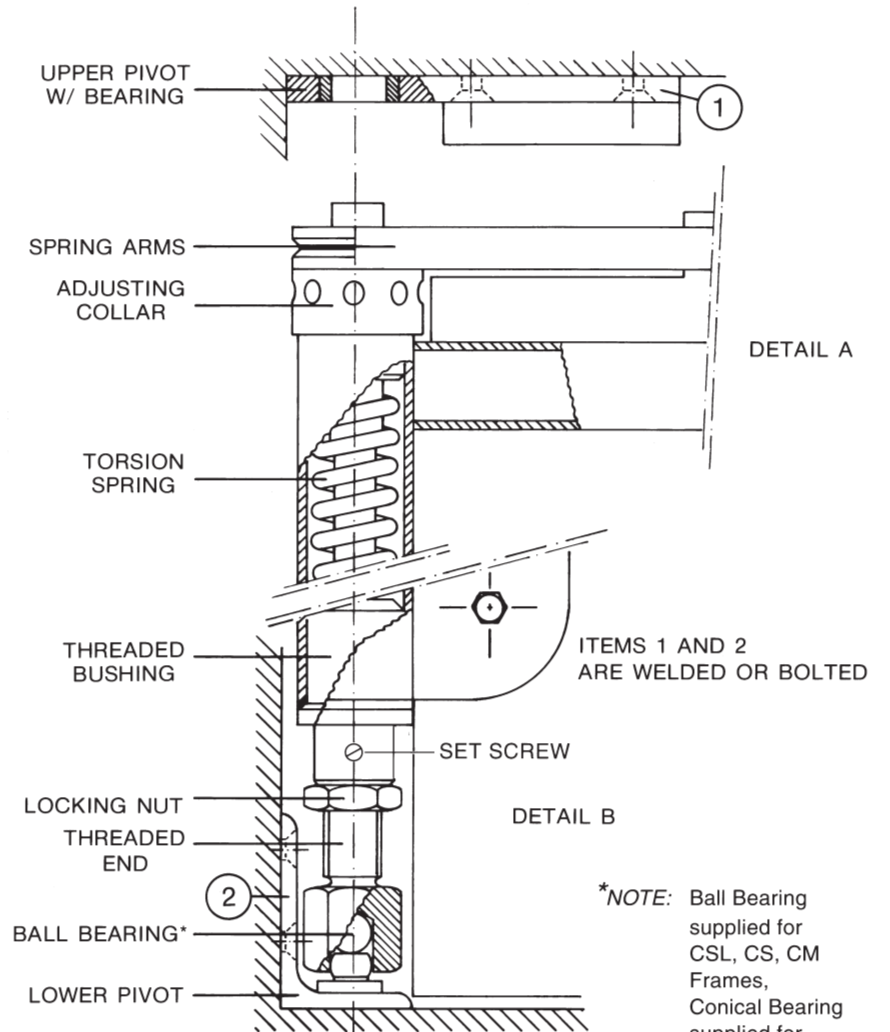


FRAME CONSTRUCTION	TUBE DIAMETER	MAX SQ. FT.
CSL	1.7/1.5" (No Horizontal Tube)	41'
CS	1.7/1.5"	64'
CM	2.4/2.1"	120'
CHD	3.0/2.7"	196'

DETAIL A



DETAIL B



*NOTE: Ball Bearing supplied for CSL, CS, CM Frames, Conical Bearing supplied for CHD Frames.

flexidoor ® TRAFFIC DOOR DETAIL		FTD-DTL
High Performance Doors and Dock Equipment		
		Buncher Commerce Park Avenue C Building 20-A Leetsdale, PA 15056-1376 Telephone: +1 412-749-0400 Toll Free: +1 800-365-3667 Fax: +1 412-749-0410