

## Manufacturers of Hi-Performance Doors & Loading Dock Equipment

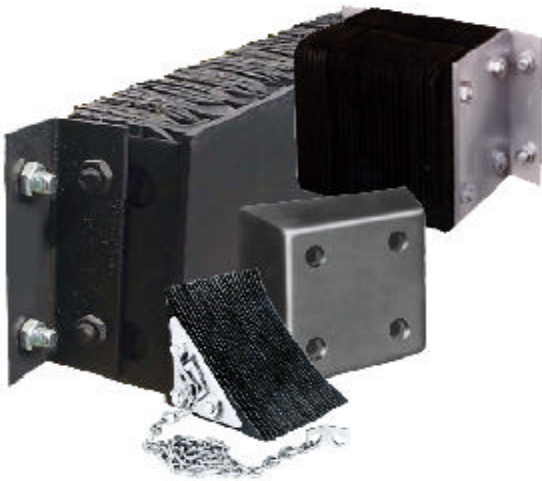


Buncher Industrial Park  
Avenue C Building 20-A  
Leetsdale, PA 15056-1376

Toll Free: 800-365-3667  
International: 412-749-0400  
Fax: 412-749-0410

www.flexoninc.com • e-mail: sales@flexoninc.com

## Contact Us Today For All of Your Loading Dock Bumper Needs!



### 88-8 Laminated Wheel Chocks

- Extra heavy-duty.
- Laminated rubber pads assembled on 3/4" bolts and compressed between 1/4" steel plates.
- Contoured to fit tire.
- Fully meets OSHA requirements.
- 5 year warranty.

### 68-9 Molded Wheel Chock

- Molded from tough fiber-reinforced rubber compound.
- Well suited for trailer trucks and other heavy equipment.
- One year warranty.

### Steel-Face Dock Bumpers

- Eliminates wear from up-and-down friction movement of trailers loading and unloading.
- Impervious to weather damage.
- Maintenance free.
- 5 year warranty.
- Fabric reinforced pads cut from selected recycled truck tires.

### Laminated Dock Bumpers

- Provides protection against vehicle damage to docks, buildings and cargo.
- Absorbs over 80% of truck impact and shock to protect dock and building.
- Eliminates costly repairs from severe shock to docks.
- Anchored through thick steel angles to provide stability and shape retention.
- Maintenance free.
- 5 year warranty.

### Molded Dock Bumpers

- Manufactured from fiber reinforced prime rubber containing nylon and polyester.
- Comes in molds varying in thickness from 2" to 6".
- All bumpers have impact recovery (ASTM 1170) of 95% with a durometer reading of 80 plus or minus 5.
- All models have pre-drilled, countersunk mounting holes for easy installation, and are drilled to accept 3/4" anchor bolts.